

**We make air handling technology. Better.**





Customers choose ClimateCraft when they want the best crafted custom air handlers designed to meet their exact site conditions for performance, size and efficiency. Since 1998 ClimateCraft has worked with customers to design and build custom solutions based on our engineering expertise and experience in air management solutions. Customers can count on ClimateCraft for:

- Configuration to site conditions
- Extreme duty
- Reliable, quality construction
- High static, low leakage applications
- Low total cost of ownership



## Our Custom Products

Indoor air handlers

Outdoor air handlers

ACCESS™ site assembled air handler replacement units

Energy recovery ventilation units

Stand-alone fan array towers

## What makes a ClimateCraft air handler the best choice?

- Thermal break as standard
- Gasketed and bolted design and air seals
- Fiberglass or injected foam insulation
- Compact footprint
- Galvanized, aluminum or stainless steel
- 2,000 to 200,000+ CFM







## Making the Impossible Replacement Possible

The ACCESS™ Replacement Air Handler Solution provides the benefits of advanced air handler technology when replacing units that are unreliable, inefficient or no longer sized for current capability needs.

- Designed and built specifically for site assembly in the most challenging installations
- Factory training of installers or jobsite supervision available
- Custom flexibility to meet size, configuration and performance requirements
- Same quality construction and options as factory-built ClimateCraft air handlers
- Components are clearly labeled for quick identification, as well as sorting and staging at the jobsite



## Outdoor Air Handler Installation





ClimateCraft has engineered innovative technologies to provide our customers with the bottom-line benefits of the latest advancements in air management. We have a commitment to ongoing product improvement to help solve issues facing our customers and our industry.

Our FanMatrix fan array system is available in new air handlers or it can be retrofitted in old air handlers to replace a large single fan that is no longer efficient, reliable, or adequately sized. FanMatrix systems are available in 2,000 to 100,000 cfm to meet a wide range of airflow requirements.

The heavy duty base and spring isolation of FanMatrix fan array systems allow for larger fans and motors, resulting in optimized efficiency with fewer fans.

### FanMatrix™ Fan Array Advantages

- Improved redundancy
- Improved airflow
- Optimized efficiency
- Smaller footprint
- Reduced maintenance
- Better acoustics

**5 Year  
Warranty**

**The FanMatrix fan array system comes with a standard five-year warranty on rotating parts. An industry first!**







## FanMatrix Technologies and Innovations

### BalanceStream® Technology

- Allows unloading to 10% without surge
- Provides full shutoff with no backdraft damper
- For new or existing FanMatrix systems



### MatrixMonitor™ System

- Continually monitors airflow measurement of individual fans and the total fan array
- Use stand-alone or integrate with a building management system



### FlexSpeed™ Motor

- Designed specifically to power fan arrays with VFDs
- Can reduce annual power usage 5% to 10% compared to incremental HP motors



### Fan Removal Winch

- Convenient method of removing fan assembly
- One winch required per array



### Floating Base Design

- Heavy duty floating fan frames
- No resonance in operating range





Design differences built into ClimateCraft air handlers set us apart from other units in the market.

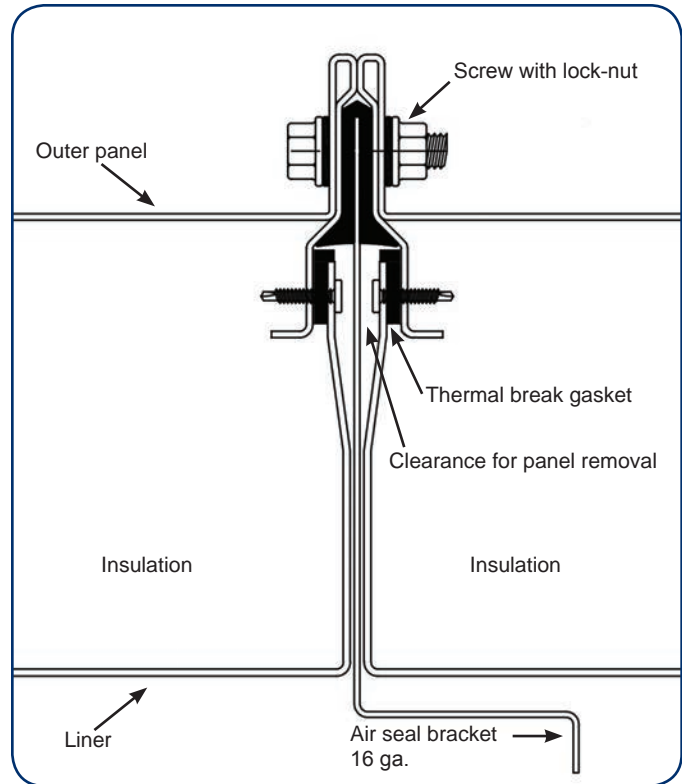
### **Innovative Cabinets**

The innovative bolted standing seam cabinet construction method is designed in compliance with ASHRAE/ANSI Standard 111, and a minimum of Class 6 Performance. Most importantly, the gasketed and bolted design does not rely on caulking for low air leakage, improved energy efficiency and reduced cabinet sweating. In fact, our integrated air seals provide best-in-class low-leakage performance.

Panels are removable with a bolted exterior standing seam that allows easy access to the internal components of the air handler.

### **Building on a Strong Base**

ClimateCraft air handlers utilize a strong welded structural base using either 2 x 5 or 2 x 8-inch steel perimeter rails with formed steel C channels on 24-inch maximum centers. Stringers between cross members also reinforce the floor. The floor material is diamond plate aluminum.



ClimateCraft's unique roll-formed panel construction provides a full thermal break and is significantly stronger than framed units that are welded and/or caulked.

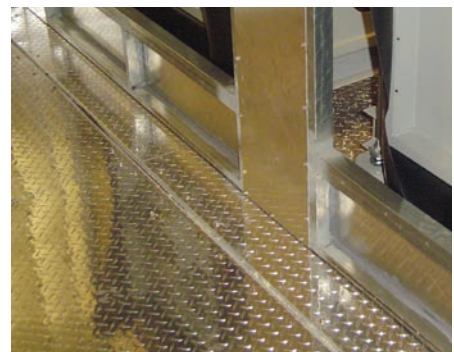
**ClimateCraft custom and replacement air handlers use the same construction design to give you the same high performance, regardless of your application.**



Removable panels with bolted exterior standing seams.



Double sloped drain pans



Aluminum diamond plate floor material



Air handler undergoing pressure testing in the factory

### Designed and Tested to Perform

ClimateCraft air handlers are designed and tested for compliance to leading industry standards.

- AHRI
- AMCA
- California OSHPD\*
- ETL
- IBC Seismic\*
- Miami Dade County

ClimateCraft units are tested in the factory to ensure that performance specifications are met before shipping to the jobsite. Customers are welcome to visit the ClimateCraft production facility to witness these tests or inspect their equipment before it ships.

\*Aluminum panel construction excluded.



Welded structural base

## Components and options available for meeting virtually any requirement

### Interior and Exterior Construction

- Galvanized
- Pre-painted
- Stainless steel
- Aluminum

### Insulation

- 2, 3, or 4-inch fiberglass
- 2, 3, or 4-inch injected foam

### Base

- Welded structural base
- Bolt-together modular panelized base
- Foamed base insulation

### Thermal Break Panels

- Gasket and foam
- Clip and fiberglass

### Filtration

- Pre-filters
- HEPA filters
- Pleated, rigid or bag filters

### Coils

- Standard stainless steel casings
- Aluminum or copper fins
- Corrosion-resistant coatings available

### Air Management

- Humidification
- Air blenders
- Supply and return dampers



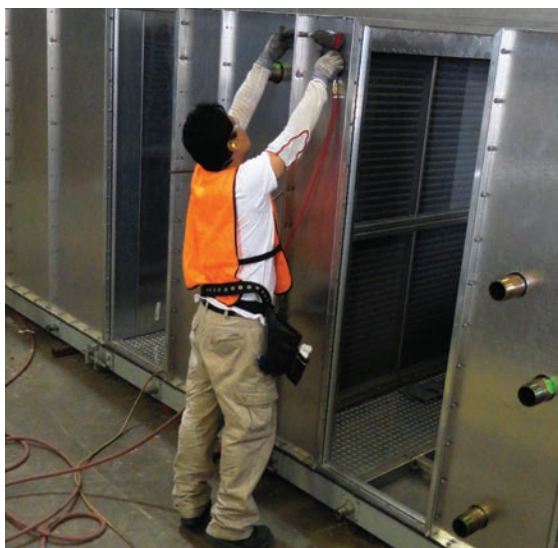


As an integrated manufacturer ClimateCraft builds and warrants not only the panels and bases of our products, but also our fans, coils and doors. This integration provides consistent quality management and process flow in our manufacturing and scheduling.

ClimateCraft products are designed, engineered and built in our facility in Oklahoma City, Oklahoma. Our factory uses Lean Manufacturing practices to further ensure that our products reflect our commitment to quality and customer satisfaction.











Custom solutions from ClimateCraft provide innovative air management in a variety of building types and applications.



Photo: Smith Sackman Reid

**Vanderbilt University Medical Center**  
**Nashville, Tennessee**

100% outdoor air ACCESS replacement air handler



**Biotechnology Company**  
**Rhode Island Manufacturing Facility**

Custom air handler



**University of Texas MD Anderson Cancer Center**  
**Houston, Texas**

ACCESS replacement air handlers



**Kauffman Center for the Performing Arts**  
**Kansas City, Missouri**

17 custom air handlers





**Republic Center Office Tower**  
**Dallas, Texas**

Custom air handlers provide 75,000 cfm to 30,000 sq ft of the 36-story office building



**IM Flash Technologies**  
**Lehi, Utah**

Custom air handlers



**New York Public Library**  
**New York, NY**

8 ACCESS replacement air handlers



**Community College of Denver**  
**Denver, Colorado**

ACCESS replacement air handler

# Working for Your Success



## North American Sales Representatives

ClimateCraft products are represented in the United States and Canada by a network of more than 80 offices experienced in solving the air management challenges faced by today's owners, engineers and contractors.

Both ClimateCraft and our representatives understand how custom air handlers need to support your important business needs.

- Cost containment
- System reliability
- Regulatory compliance
- Project time line
- Indoor air quality concerns

To learn more about ClimateCraft solutions and capabilities, please contact a sales representative near you. **To find a representative, visit [climatecraft.com/RepNetwork](http://climatecraft.com/RepNetwork).**

## Support at the Jobsite

ClimateCraft excels at providing you with the tools you need for a smooth installation that meets your project time line. We offer multiple options for installer training—one is sure to fit your project.

- At our factory
- On your jobsite
- Field supervision of installers by our experts

In addition, our ACCESS™ replacement air handlers, which typically have the tightest installation time lines, are clearly labeled for efficient identification, sorting and staging at the jobsite.

We also provide easy-to-follow graphical instructions for step-by-step assembly of ACCESS units at the jobsite. 3D drawings of the unit and detailed panel maps help installers stay on schedule and eliminate any guesswork.

ClimateCraft's fan arrangement products allow for fans to be turned on and off for safety, repair and maintenance purposes. ClimateCraft's fan arrangement products are not designed to turn individual fans on and off for the purpose of improving fan arrangement efficiency, and ClimateCraft does not endorse turning individual fans on and off for the purpose of improving fan efficiency. Any statement to the contrary is not supported by ClimateCraft.



518 North Indiana Avenue  
Oklahoma City, OK 73106  
Phone: 405.415.9230  
[www.climatecraft.com](http://www.climatecraft.com)

ACCESS, BalanceStream, FanMatrix,  
FlexSpeed and MatrixMonitor are trademarks  
or registered trademarks of ClimateCraft, Inc.

BR-SL-A-121619-CLC  
© 2019 ClimateCraft, Inc.